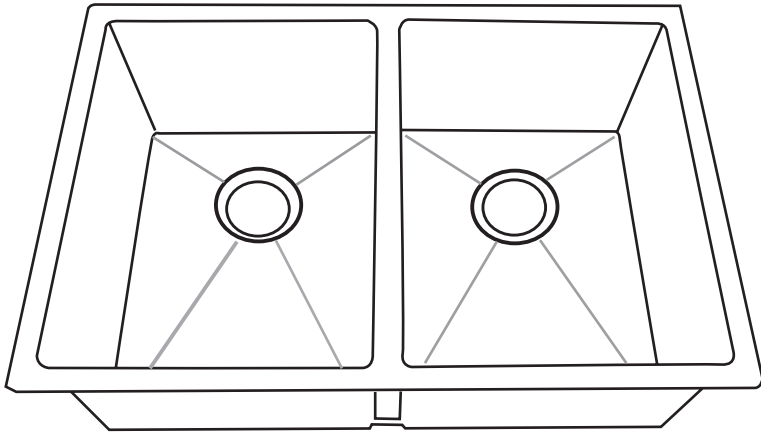


Installation Guide

Undermount Kitchen Sink SRR2919A

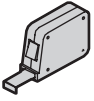


Thank You For Choosing Valley Acrylic

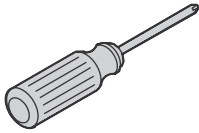
All the information in this guide is based upon the latest product information available at the time of publication. We reserve the right to make changes in product characteristics, packaging, or availability at any time without notice.

Please take a few minutes to review this guide. If you encounter any installation or performance problems, please call 1-877-398-tubs (8827) from within the USA and Canada.

Tools and Materials



Tape Measure



Screwdriver



Pencil



Safety Glasses



Gloves



Silicone Sealant



Rags

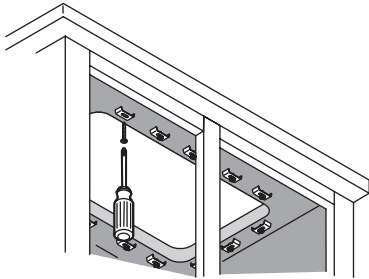
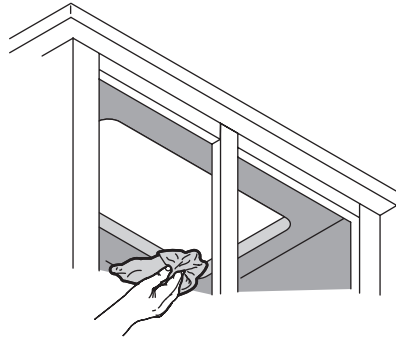
Before You Begin



WARNING: Risk of personal injury. Edges are sharp. Wear gloves when handling the sink.

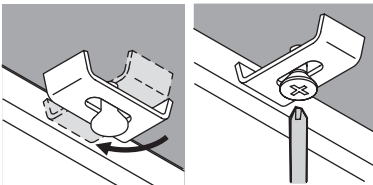
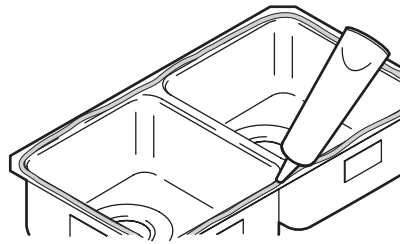
- Choose a mounting style. Some models are offered with reveal and no-reveal mounting options. See the provided cut-out template for details.
- Provide your countertop supplier with your sink and faucet model number when ordering your countertop. When determining anchor locations, allow for faucet clearance.
- Fasteners are not included. The countertop supplier should install anchors into the underside of the countertop.
- For multiple-bowl installations, a minimum of 2-3/16" (5.6cm) is required between bowls. Any required support should be determined by the countertop supplier.

Step 1: Clean the top and underside of the counter and the rim of the sink.



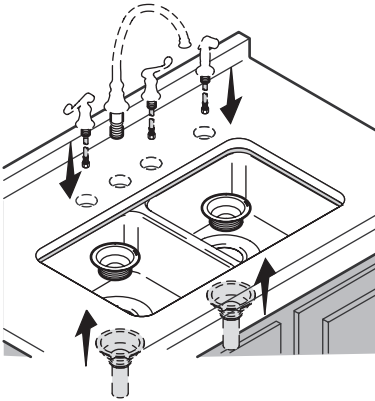
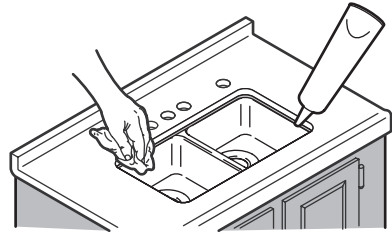
Step 2: Space the mounting clips around the underside of the countertop and loosely attach.

Step 3: Apply sealant near the inside edge



Step 4: Lift the sink into place. Rotate the clips and tighten evenly. Do not over tighten!

Step 5: Apply silicone sealant (optional); wipe away any excess. Fill voids and allow to dry.



Step 6: Install the faucet and the strainers.

Step 7: Connect the trap to the drain. Complete the faucet connections. Run water and check for leaks.

