

3321613

CERAMIC BASIN

INSTALLATION GUIDE

Thank you for choosing Valley Bath & Kitchen products. This installation guide provides essential information to ensure a smooth and successful installation.

BEFORE YOU BEGIN

Read all instructions: Please review the entire guide carefully before starting the installation.

Verify local building codes: Ensure that your installation complies with local building standards and regulations.

Inspect the unit: After removing the product from its packaging, carefully inspect it for any signs of damage or defects. Do not dispose of the packaging until you have verified that the unit is in perfect condition.

Report damages immediately: If you discover any damage or defects, please contact Valley Bath & Kitchen at 1-877-398-8827. **Note: The warranty does not cover damages or finish defects after installation.** Valley Bath & Kitchen's responsibility for shipping-related damages ends upon delivery to the carrier in good condition. Any transport-related damage claims should be directed to the carrier.

CAUTION

Risk of personal injury or product damage. Handle with care. The product may break, chip, or cause injury if mishandled. Always get assistance when lifting or moving the unit.

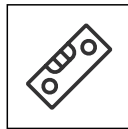
REQUIRED TOOLS:



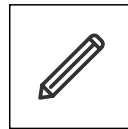
Tape Measure



Silicone Gun



Level



Pencil



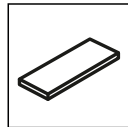
Planer



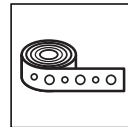
Screwdriver



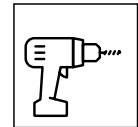
Screws



Wood Plank



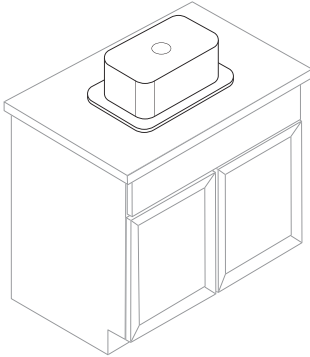
Plumbing Strap



Handrill

TOP MOUNT INSTALLATION

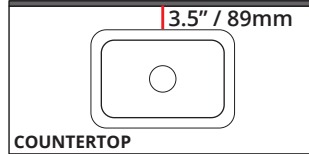
01



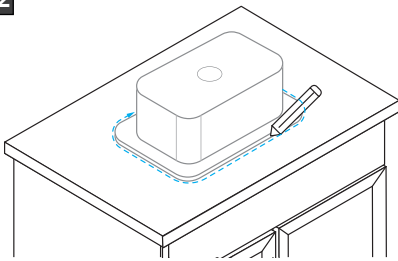
Position the Sink

Place the sink upside down onto the countertop, ensuring a minimum distance of 3.5" from the sink edge to the wall. Confirm that there is enough space beneath the sink for supply and drain pipe installation.

WALL



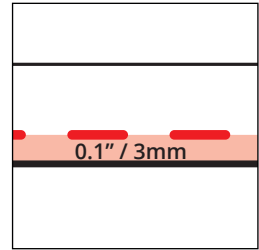
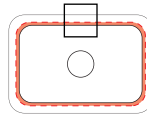
02



Outline the Sink

Use a pencil to trace around the edge of the sink on the countertop.

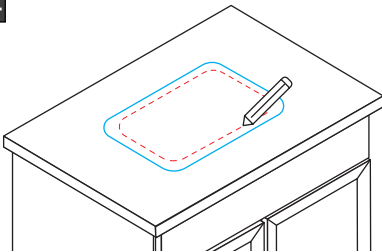
03



Mark Installation Border

Measure 0.1 inches inside the sink outline to create a new, slightly smaller outline. This will be the cutting line.

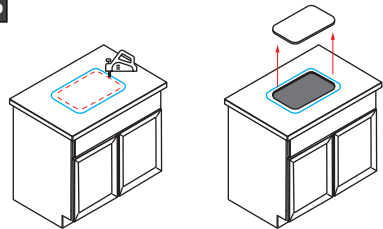
04



Mark the Cutting Line

Draw an inner line on the countertop based on the new outline to mark where the countertop will be cut.

05

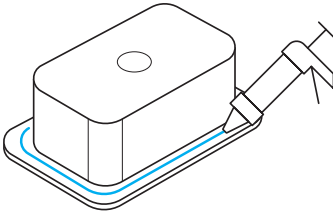


Cut the Installation Hole

Using a jigsaw or planer, drill a starter hole along the inner line, then cut along the marked line to create the sink opening. Ensure that the cutout fits the sink snugly.

TOP MOUNT INSTALLATION

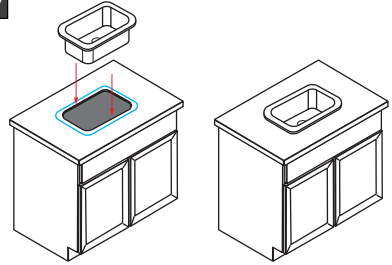
06



Apply Silicone to Sink Rim

Turn the sink over and apply a continuous bead of silicone along the bottom rim to ensure a secure fit

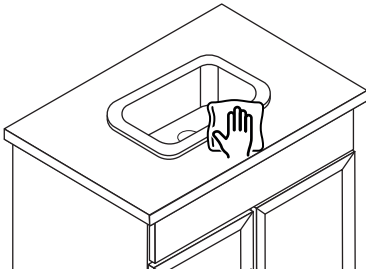
07



Install the Sink

Carefully place the sink into the opening on the countertop.

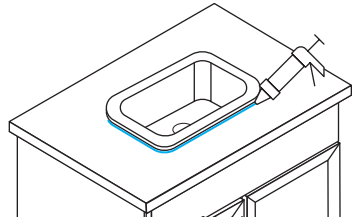
08



Clean the Edges

Clean the area around the sink rim

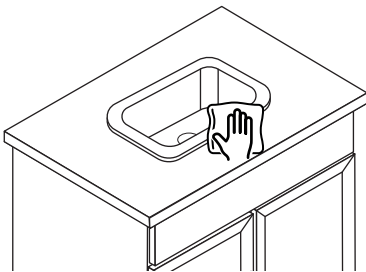
09



Seal the Edges

After cleaning the area, apply a bead of silicone sealant between the sink's top flange and the countertop to create a watertight seal.

10



Remove Excess Silicone

Wipe away any excess silicone immediately for a clean finish.

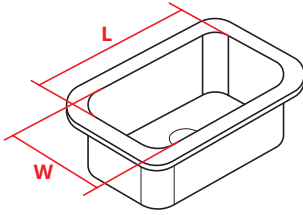
11

Install Strainer and Faucet

Install the strainer assembly (not included) according to the manufacturer's instructions. Apply a bead of sealing putty beneath the strainer to create a watertight seal between the sink and drain. Remove any excess putty after installation.

UNDERMOUNT INSTALLATION

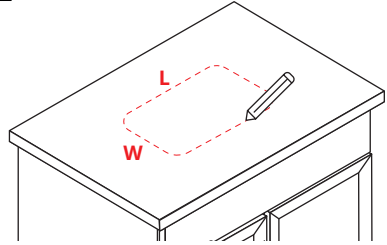
01



Measure the Sink Opening

Measure the interior dimensions of the sink to ensure proper fitting.

02



Outline the Sink

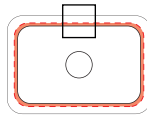
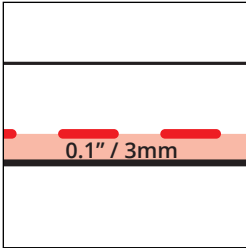
Use a pencil to trace the inside edge of the sink onto the countertop

03

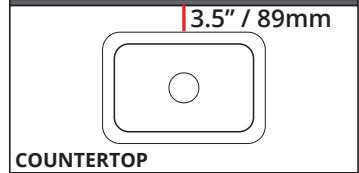
Mark the Cut-Out Border

3.1 Measure 0.1 inches inside the sink outline to create a new, outline.

This will be the cutting line.

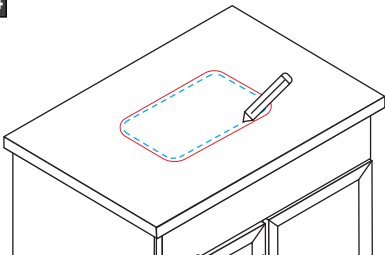


WALL



Ensure there is a minimum clearance of 3.5 inches from the sink edge to the wall. Confirm there is sufficient space beneath the countertop for the supply and drain pipes

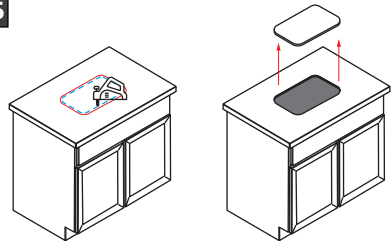
04



Draw the Cutting Line

Using the new inner outline, draw a clear cutting line on the countertop

05

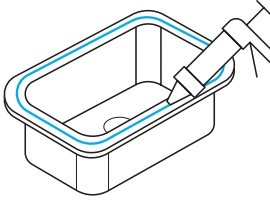


Cut the Sink Opening

Drill a starter hole along the cutting line using a jigsaw or planer. Carefully cut along the marked line to create the sink opening.

UNDERMOUNT INSTALLATION

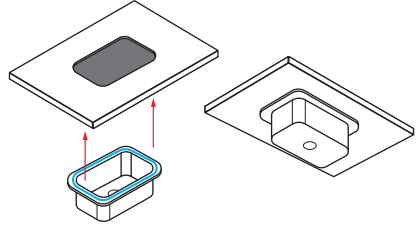
06



Apply Silicone to Sink Rim

Apply a continuous bead of silicone around the top rim of the sink for a watertight and secure fit.

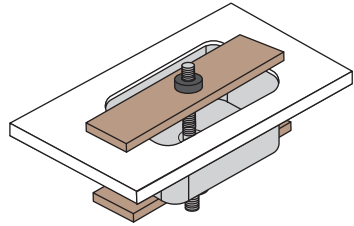
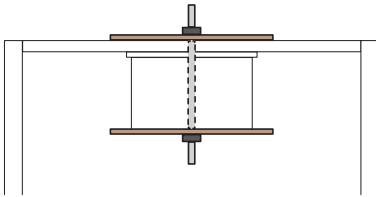
07



Install the Sink

Carefully place the sink into the opening on the countertop as shown.

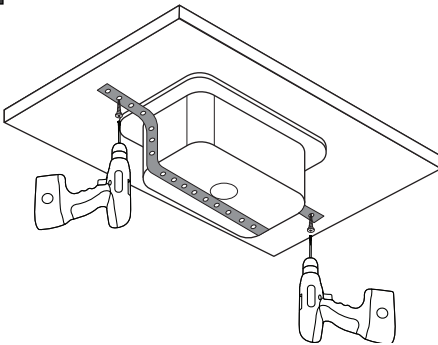
08



Secure the Sink with Clamps

- Use clamps to hold the sink securely in place while the silicone sets.
- Ensure the sink remains properly aligned during this process.
- Wait at least **24 hours** for the silicone to fully cure before removing the clamps.

09



Install the Plumbing Strap

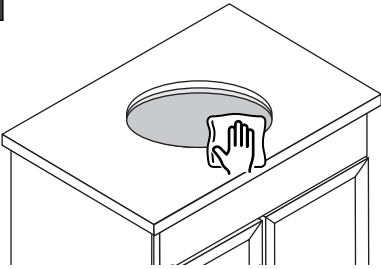
9.1 After waiting at least **24 hours** for the silicone to dry, position the plumbing strap underneath the sink, ensuring it is properly aligned for support.

Mark the screw locations on the countertop, if necessary.

9.2 Secure the plumbing strap firmly to the countertop with screws, ensuring it is tightly fastened for stability

UNDERMOUNT INSTALLATION

10



Remove Excess Silicone

Wipe away any excess silicone immediately for a clean finish.

11

Install Strainer and Faucet

Install the strainer assembly (not included) according to the manufacturer's instructions. Apply a bead of sealing putty beneath the strainer to create a watertight seal between the sink and drain. Remove any excess putty after installation.

WARRANTY INFORMATION:

These products have a limited warranty for residential use for a period of up to 1 year from the original purchase date, against any failure from improper manufacturing defects.

Congratulations! You are now a part of the Valley Bath & Kitchen family, and an owner of a great product!