

Thank you for choosing Valley Acrylic Products. This installation manual provides general information on the installation of our products.

BEFORE YOU BEGIN

- Read all instructions before beginning installation.
- Consult local building codes to make sure the installation complies with standards.
- Remove the unit from its packaging. Before disposing of packaging , inspect the unit to make sure it is in good condition.
- Should inspection reveal any damage or defect in the finish, Contact Valley Acrylic Bath Ltd. at 1-877-398-8827 . The warranty does not cover damages or defects in the finish once the unit has been installed. The manufacturers responsibility for shipping damages ceases upon delivery of the product in good order to the carrier. All complaints regarding damage due to transport must be made directly to the carrier.



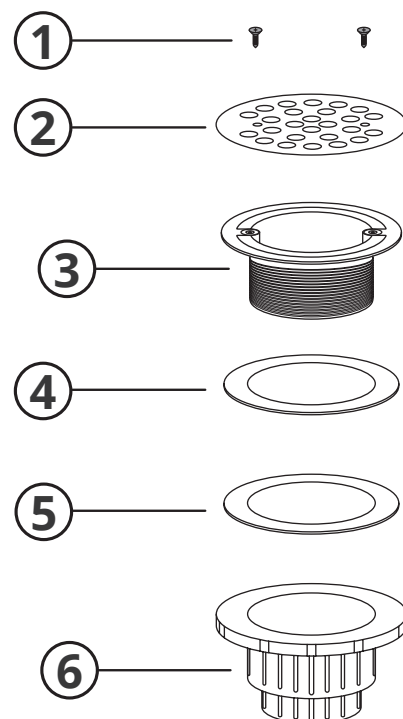
CAUTION

RISK OF PERSONAL INJURY OR PRODUCT DAMAGE. HANDLE WITH CARE. PRODUCT CAN BREAK, CHIP OR CAUSE INJURY IF HANDLED CARELESSLY.

WE RECOMMEND THE INSTALLATION OF THIS PRODUCT BE DONE BY A LICENSED PROFESSIONAL PLUMBER.

PARTS DIAGRAM

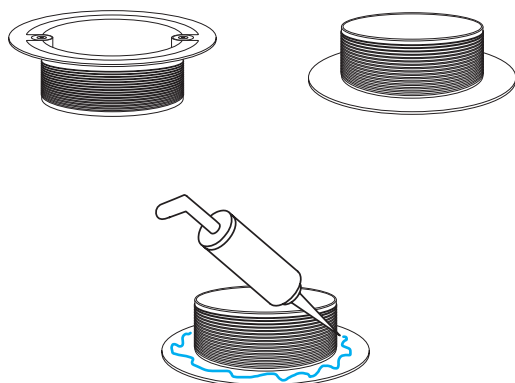
- 1- SCREWS
- 2- STAINLESS STEEL GRID
- 3- MALE THREADED TOP PART
- 4- RUBBER GASKET
- 5- PAPER GASKET
- 6- FEMALE THREADED BOTTOM PART



YOU MUST HAVE ACCESS UNDERNEATH THE SHOWER FLOOR FOR A PROPER INSTALLATION OF THIS TYPE OF SHOWER DRAIN. WATERTIGHT INSTALLATION OF THE DRAIN IS THE INSTALLER'S RESPONSIBILITY. DAMAGES CAUSED BY DRAIN LEAKAGE ARE EXCLUDED FROM THE LIMITED WARRANTY OF THE PRODUCT.

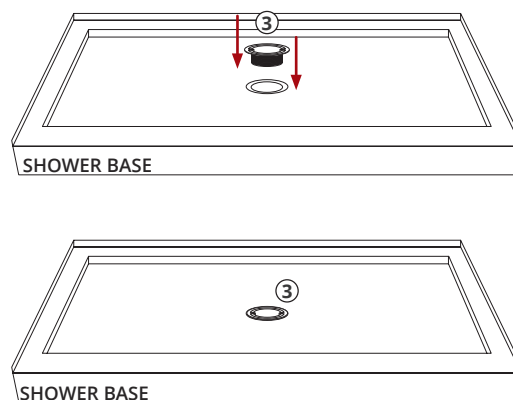
01

Apply silicone to the bottom flange of the male threaded top part (3) as shown.



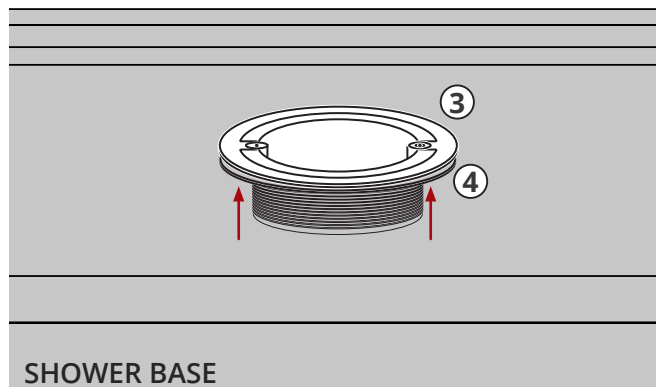
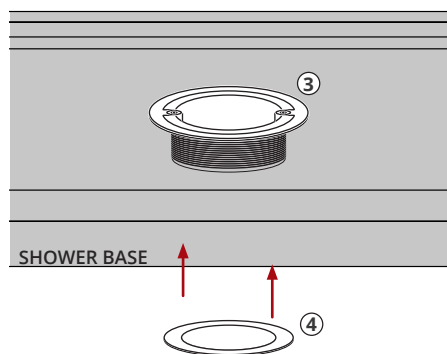
02

Place the top part (3) in the shower base drain hole opening as shown.



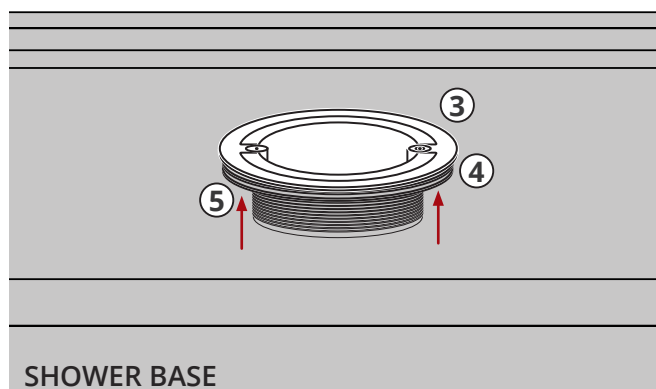
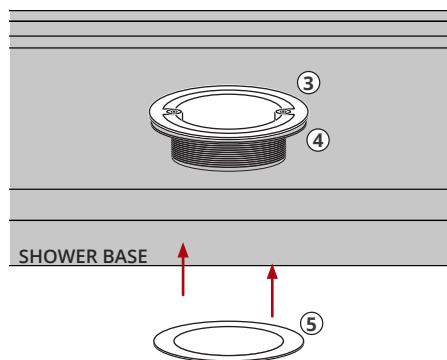
03

Place the rubber gasket (4) around the male thread (3) under the shower base, facing the shower floor as shown



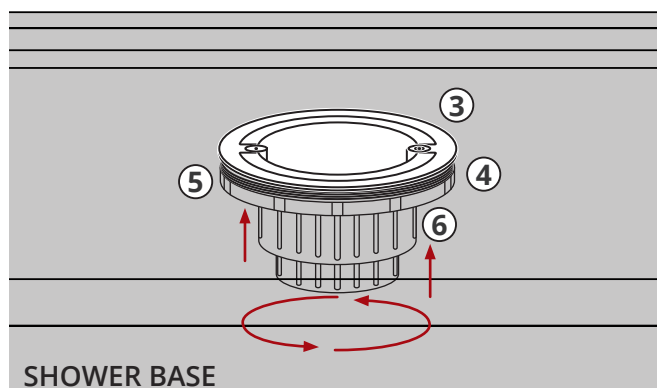
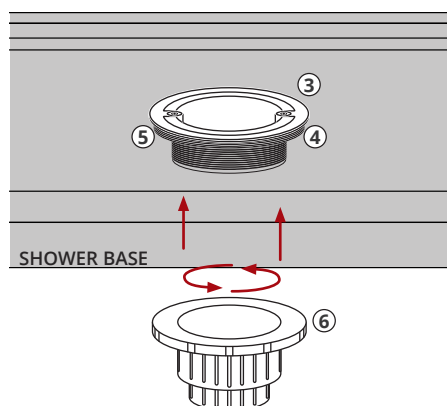
04

Place the paper gasket (5) between the rubber gasket (4) and the bottom part (6) AS SHOWN



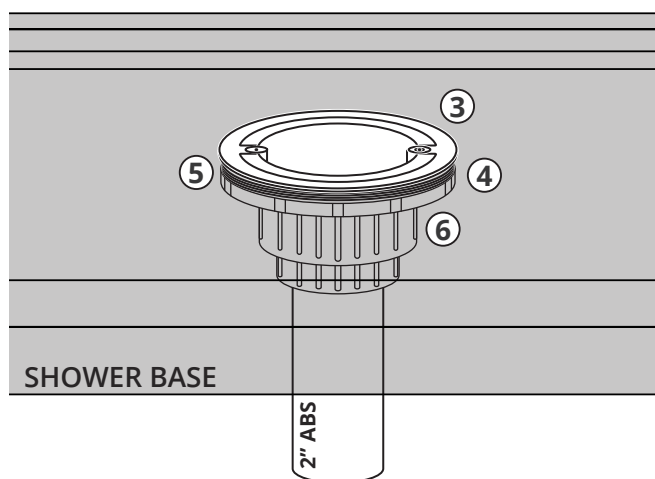
05

Screw the bottom part (6) and make sure both gaskets are centered to the shower floor opening



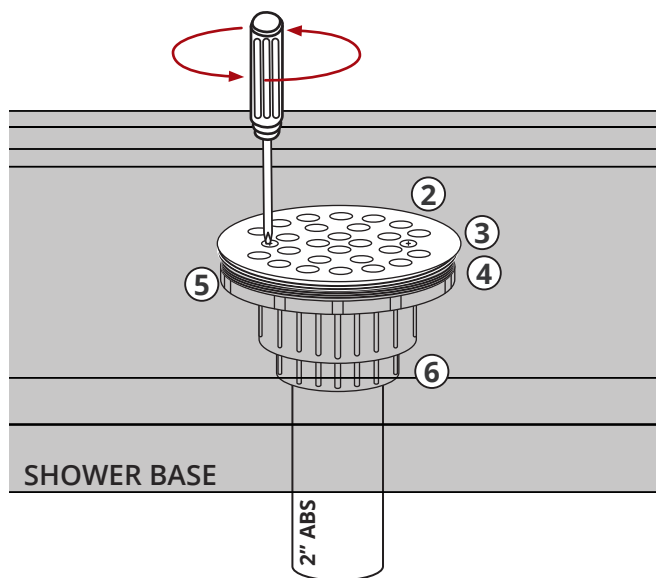
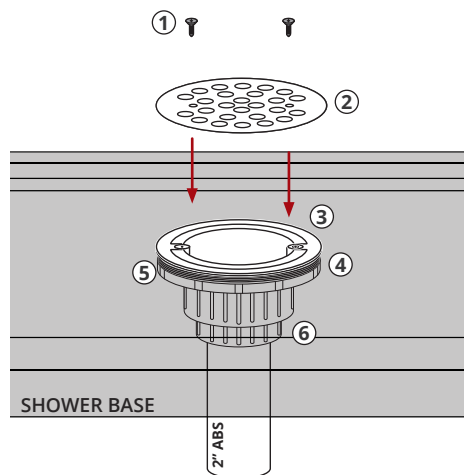
06

Connect the 2" ABS pipe, as recommended by the pipe manufacturer.

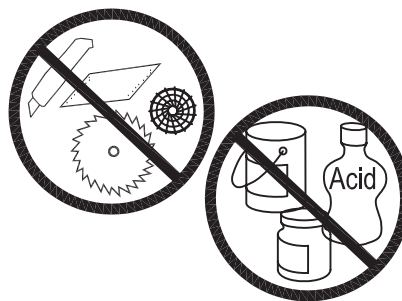


07

Install the Stainless Steel Grid (2) with the provided screws (1)



CLEANING AND MAINTENANCE



To keep the product clean, shining and in good condition, follow the steps as below:

- Flush with clean water & dry with soft cloth only;
- **Avoid** polishing powder, cleaning powder and any kind of detergent.



Congratulations! You are now a part of the Valley Acrylic family