



INFINITY SHOWER BASE REPAIR KIT MANUAL

⚠ ATTENTION: PLEASE READ AND CAREFULLY FOLLOW EACH STEP BEFORE PROCEEDING. ⚠

SUPPLIED ITEMS

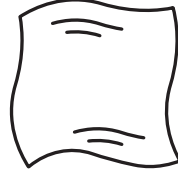


PAINT



CATALYST

ITEMS NEEDED



CLOTH

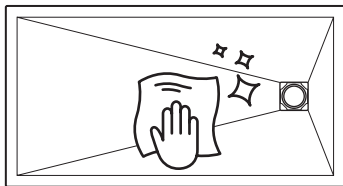


ALCOHOL/ACETONE

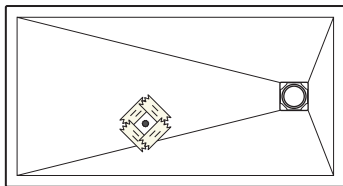
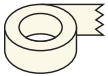


MASKING
TAPE

- 01** 1.1 Clean the affected area with a cloth dampened with alcohol or acetone, and allow it to dry completely.



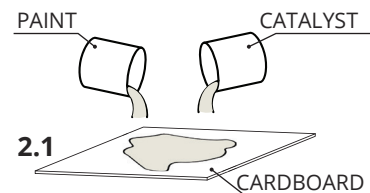
- 1.2 Use masking tape to cover the Infinity shower base, ensuring the affected area remains uncovered.



- 02** Mix the paint (anti-slip finish) with the catalyst on cardboard in a ratio of 2 parts paint to 1 part catalyst (double the amount of anti-slip finish compared to catalyst).



WARNING: DO NOT MIX THE ENTIRE QUANTITY OF PAINT (ANTI-SLIP FINISH) AND CATALYST AT ONCE. YOU MAY NEED TO USE IT TWICE.

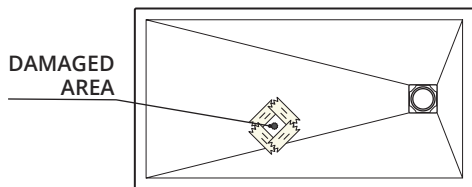


2.1

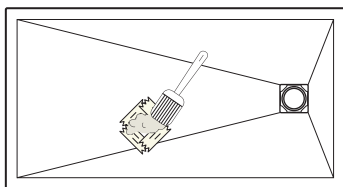


2.2

- 03** Apply the mixture with a brush and let it dry for about 2 hours. If a second coat is needed, repeat the process.



DAMAGED
AREA



- 04** Remove the covering from the protected area and wait 24 hours before reusing the INFINITY shower base.

