

---

### INSTALLATION GUIDE

Thank you for choosing Valley Acrylic Products. This installation manual provides general information on the installation of our products.

#### BEFORE YOU BEGIN

- Read all instructions before beginning installation.
- Consult local building codes to make sure the installation complies with standards.
- Remove the unit from its packaging. Before disposing of packaging , inspect the unit to make sure it is in good condition.
- Should inspection reveal any damage or defect in the finish, Contact Valley Acrylic Bath Ltd. at 1-877-398-8827 . The warranty does not cover damages or defects in the finish once the unit has been installed. The manufacturers responsibility for shipping damages ceases upon delivery of the product in good order to the carrier. All complaints regarding damage due to transport must be made directly to the carrier.

#### **CAUTION**

**RISK OF PERSONAL INJURY OR PRODUCT DAMAGE. HANDLE WITH CARE. PRODUCT CAN BREAK, CHIP OR CAUSE INJURY IF HANDLED CARELESSLY. GET HELP LIFTING THE LAVATORY.**

## INSTALLATION GUIDE

### REQUIRED TOOLS



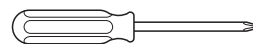
Teflon Tape



Plumbing pliers



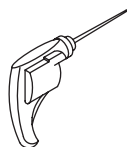
Safety Goggles



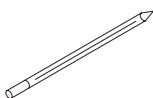
Phillips screwdriver



Silicone Gun



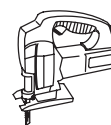
Cordless Drill



Pencil



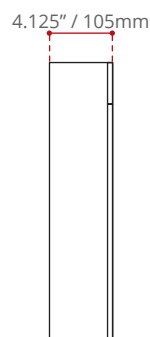
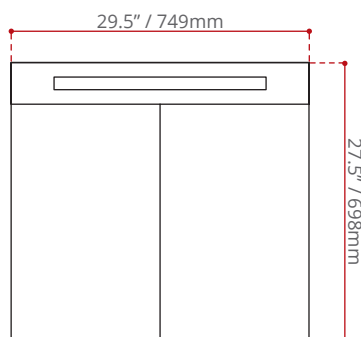
Tape Measure



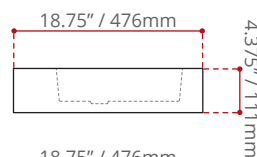
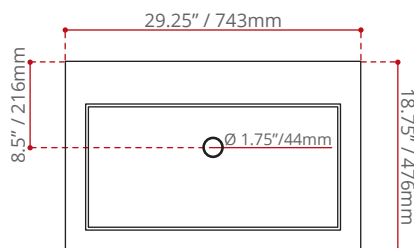
Jigsaw

### SPECS

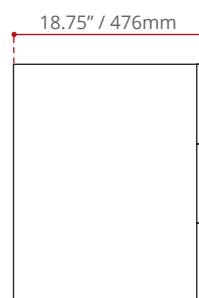
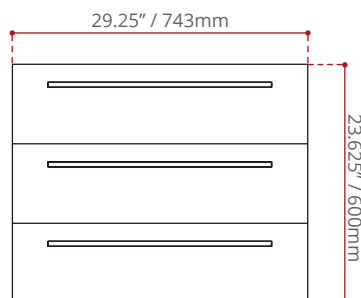
MIRROR



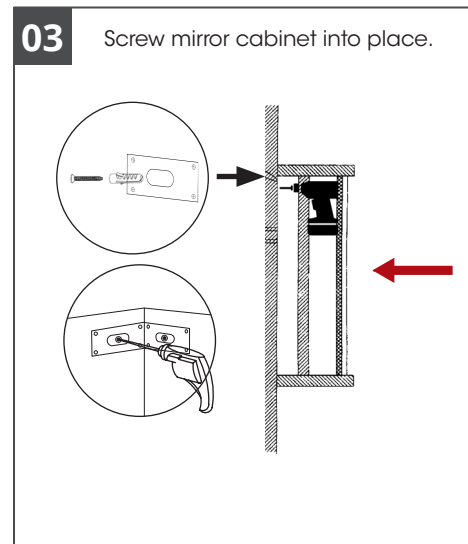
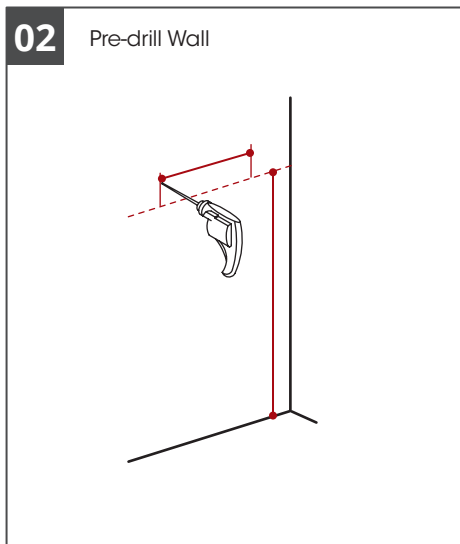
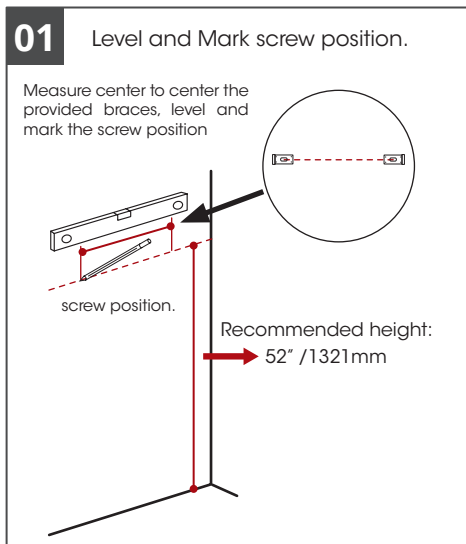
BASIN



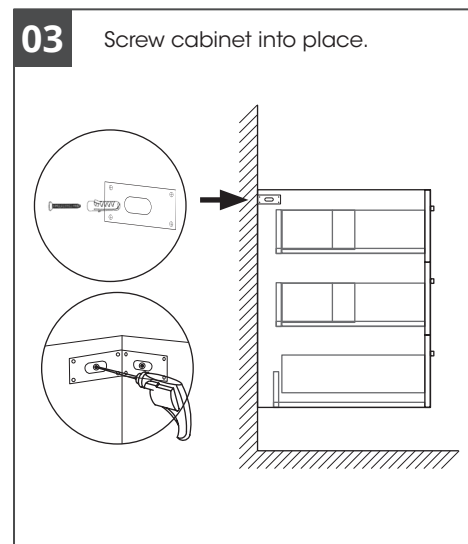
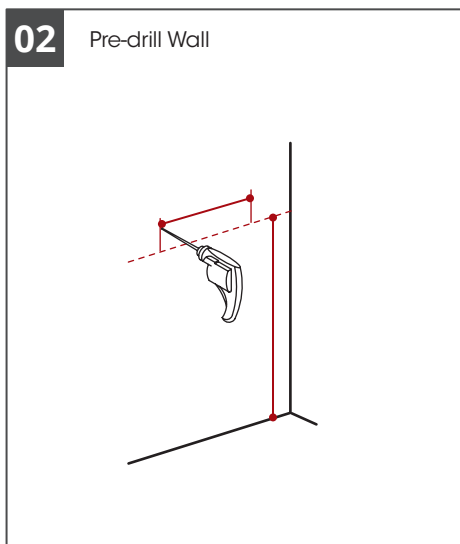
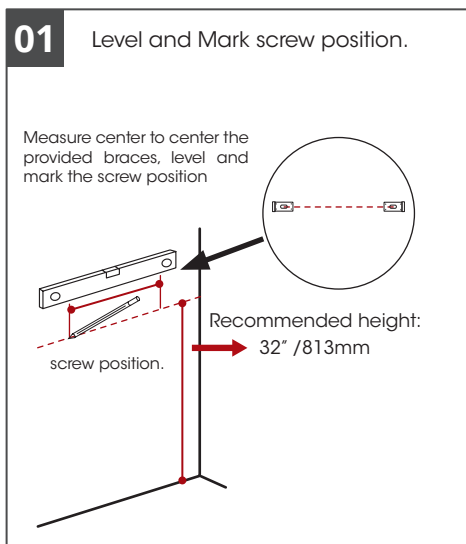
CABINET



## MIRROR INSTALLATION

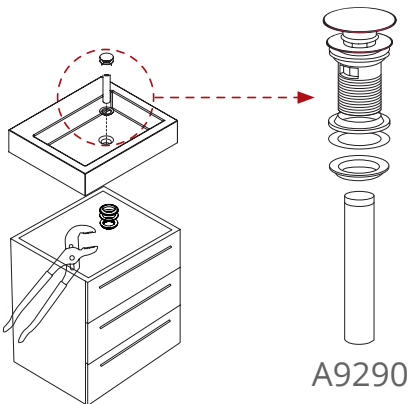


## CABINET INSTALLATION



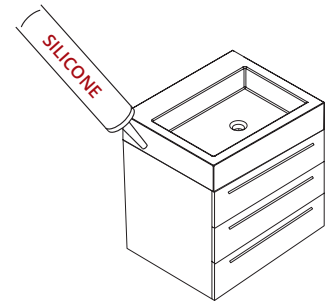
## BASIN INSTALLATION

### 01 Drain Installation



Mount the drain assembly (not included) on the sink or on the countertop following the manufacturer's instructions. Be certain to apply a bead of sealing putty on the underside of the drain in order to ensure a watertight seal between the sink and drain. Remove excess putty after installing drain on sink.

### 02 Pre-drill Wall



Clean the basin and work area. Remove residual dirt and dust.  
Seal the edge of the basin with a clear silicone.  
Allow silicone to dry for 24 hours before use.

## MAINTENANCE

When you buy Valley's acrylic products, you know that you are getting an unparalleled quality, service & a beautiful, environmentally friendly designer product made to YOUR specification. Valley Acrylic products are long lasting, and durable; keeping their shine & luster their entire lives.

Our products are hassle free when it comes to maintaining their sleek look. Valley's products are non-porous, and entirely leak-proof meaning no more mould, mildew & mineral build-ups. Put an end to endless scrubbing and harsh chemicals and spend more time on relaxing with your purchase; a light, occasional round of soap and hot water is all you need to keep your product looking brand new for years!