

COLOUR OPTION

COLOUR OPTIONS ARE MADE TO ORDER - NO REFUND - NO RETURN -

BISCUIT FINISH



MODEL No: SWSOD6030L3
(LEFT HAND DRAIN - RIGHT HAND SEAT)

MODEL No: SWSOD6030R3
(RIGHT HAND DRAIN - LEFT HAND SEAT)

Valley's single threshold, offset drain acrylic shower base with seat is meant to be installed in an alcove setting. This base features a built-in 17" high seat for the utmost comfort. Valley's acrylic shower bases are made at our facility in Mission, BC (Canada) out of high gloss, crack-resistant acrylic. Complies with CSA & IAPMO standards.

DESCRIPTION:

- Single Threshold / Opening
- **White finish**
- Off-set Drain location
- Integral seat
- High gloss / Crack-resistant acrylic
- Made in Canada
- Complies with CSA & IAPMO standards.

CUSTOMIZE YOUR SHOWER BASE

ALL UPCHARGE OPTIONS ARE MADE TO ORDER - NO REFUND - NO RETURN -

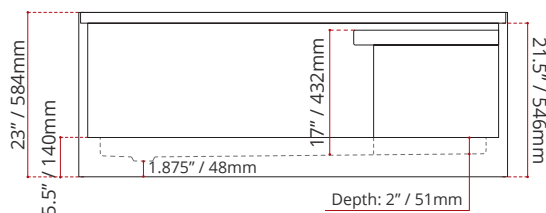
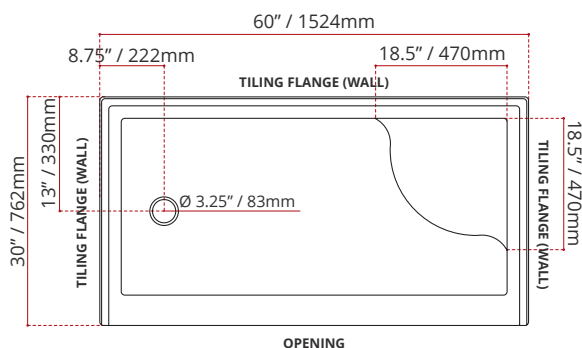
AVAILABLE CUSTOMIZATION OPTIONS	MODEL No.
TEXTURED BOTTOM	C4
DOUBLE TILING FLANGE	C5
TEXTURED BOTTOM + DOUBLE TILING FLANGE	C45

SHIPPING INFORMATION:

- Length: 62" / 1575mm
- Net Weight: 37.5 kg / 83 lbs.
- Width: 34" / 864mm
- Gross Weight: 40 kg / 88.2 lbs.
- Height: 26" / 660mm

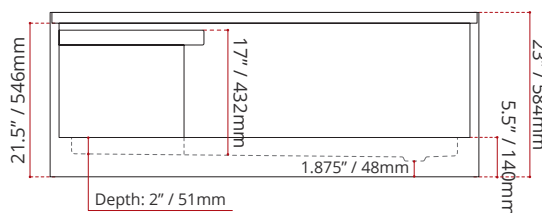
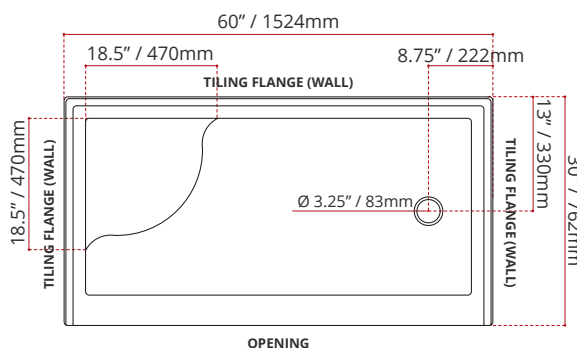
SWSOD6030L1

(LEFT HAND DRAIN LOCATION - RIGHT HAND SEAT)
DRAIN WILL ALWAYS BE OPPOSITE SIDE FROM SEAT



SWSOD6030R1

(RIGHT HAND DRAIN LOCATION - LEFT HAND SEAT)
DRAIN WILL ALWAYS BE OPPOSITE SIDE FROM SEAT



DISCLAIMER: Measurements may vary $\pm \frac{1}{4}$ " (Diagram Not to scale)

