

# SKIRTED BATHTUB INSTALLATION GUIDE

**Thank you for choosing Valley Bath & Kitchen.**

This installation manual provides general guidelines for the proper installation of our products.

## **BEFORE YOU BEGIN INSTALLATION**

- Carefully **read through the entire instruction manual** before starting.
- Check your **local building codes** to ensure the installation meets all relevant standards and regulations.
- Unpack the unit and inspect it thoroughly before disposing of the packaging or accepting it from your salesperson.
- It is recommended to **place the unit in the bathroom** before beginning the installation process.
- To prevent damage during installation, we recommend placing a **flat piece of cardboard** on the base of the unit and covering it with a **moving blanket**.

## **INSPECTION AND DAMAGE POLICY**

- If any damage or defects in the finish are found during inspection, **do not proceed with installation. Contact us immediately.**
- Please note: The **warranty does not cover** any damages or defects to the finish once the unit has been installed.
- Valley Bath & Kitchen's liability for shipping damage ends upon delivery to the carrier in good condition.
- Any transport-related damage claims must be made directly with the shipping carrier.

## **SITE REQUIREMENTS**

- The **floor must be level** and structurally capable of supporting the weight of the water-filled unit.
- Confirm that **all dimensions on your plans match the actual unit dimensions.**
- If the bathtub includes both a whirlpool and an air system, ensure space is available for the air blower—either within or outside the alcove or island.
- If installing the blower outside the tub, it can be positioned up to 9 feet away.
- A minimum access panel of 30" x 15" (750 mm x 400 mm) must be located near the whirlpool pump and/or air system blower to allow for servicing.
- Ensure access is provided to all system components, including the: Water heater, Light, Nozzles, Electronic and air controls, Faucet.

**Note:**

- Whirlpool and/or air systems must be fully connected before final installation.
- Please refer to the specific installation and user guides for the whirlpool and air systems for further details



## IMPORTANT INFORMATION

### STRUCTURE INSTALLATION

- **Do not** build the surrounding structure before receiving and inspecting your unit.
- All structural measurements must be verified against the actual unit to ensure a precise fit and proper installation.

### PLUMBING

- **Complete all plumbing and drainage connections** before securing the unit in place.
- We highly recommend using a **Red Seal certified plumber** to perform all plumbing installations.
- **Before drilling** into the floor for the drainpipe, confirm that there are no hidden elements such as: Pipes, Floor joists, Heating ducts, Electrical wiring

This step is critical to avoid accidental damage or hazards.

### LEVELING AND SUPPORT

- The unit **must be installed perfectly level** to ensure proper function and drainage.
- Use the adjustable 2x4 legs under the wooden base or apply mortar cement to achieve proper leveling.
- All legs **must be in contact with the floor**. If the existing 2x4 legs don't provide sufficient support, a **wood edge or frame must be added** to ensure stability.

For optimal results:

- Apply a **layer of mortar** beneath the bathtub legs to enhance support, improve sound insulation, and aid in leveling.
- Cover the mortar with a 1/16" (2 mm) polyethylene sheet before placing the unit.
- The mortar layer should be thick enough to support leveling without lifting the unit excessively.
- Once in position, **ensure the unit is level in both directions** to allow proper drainage.



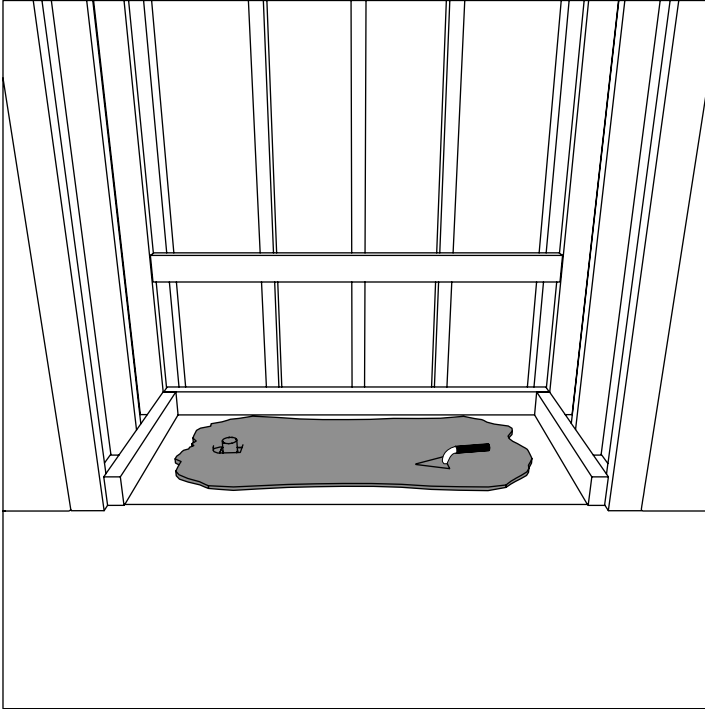
**Do not attempt to level the unit by placing supports behind or directly under the front flange. Leveling must be done beneath the wooden legs under the base.**

### REQUIRED TOOLS

- Measuring tape • Pencil • 3/16" (5mm) and 1/8" (3mm) drill bits • Hole saw • Electric drill • Screwdriver • Pliers • Level • Safety glasses • Water-resistant glue • Silicone sealant • Wood wedges • 2" x 2" x 3" wood blocks (51mm x 51mm x 76mm) • No. 8 x 1 1/4" screws (4.2mm x 32mm) flat or Phillips head • 3/4" x 1" wood stud (19mm x 25mm) for alcove installation • Mortar

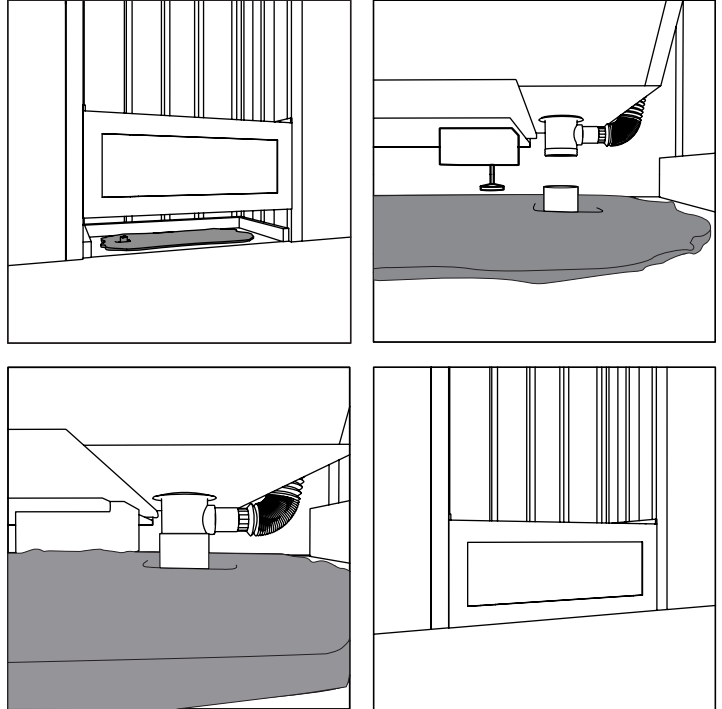
### 01 Apply Mortar

Spread a layer of mortar on the floor surface where the tub will be placed. This provides added support, soundproofing, and helps with leveling.



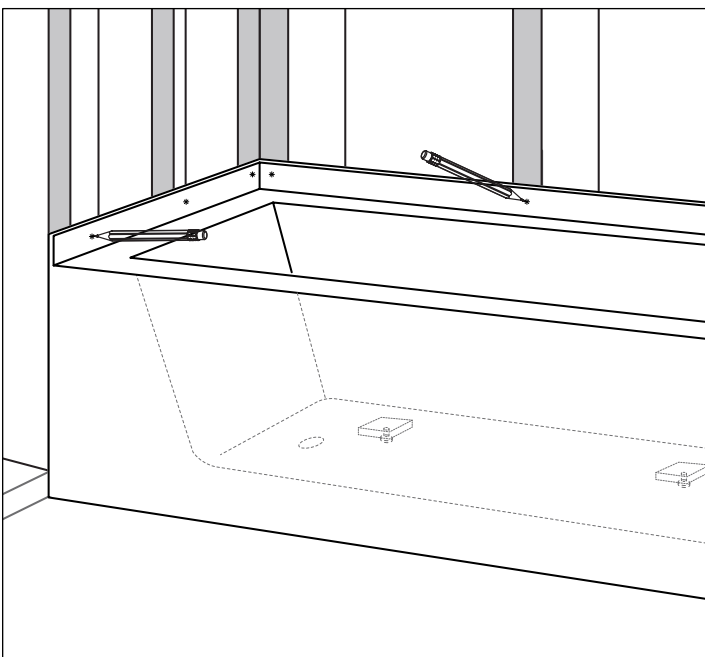
### 02 Position the Bathtub

Carefully lift the bathtub into place, ensuring the drain aligns with the floor pipe. Adjust the bathtub legs to achieve a level placement.



### 03 Mark Stud Locations

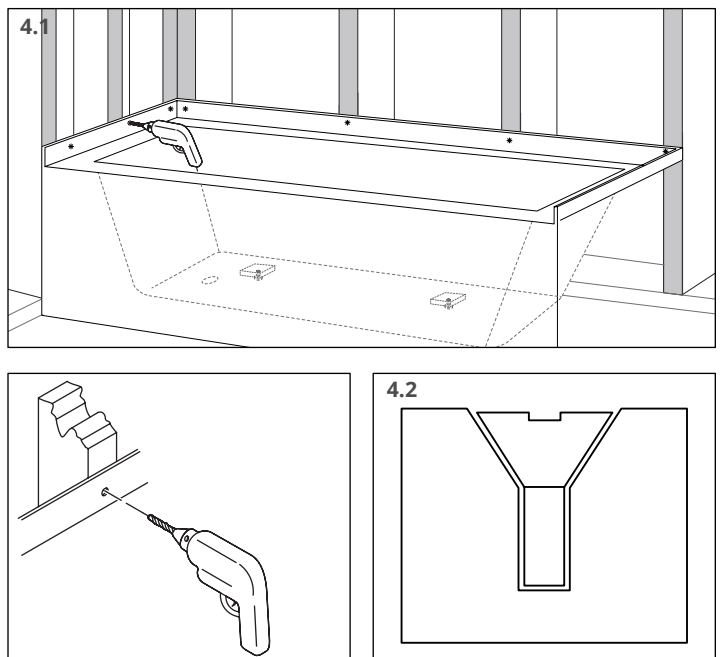
Use a pencil to mark the wall stud positions along the bathtub flange.



### 04 Drill and Prepare Mounting Holes

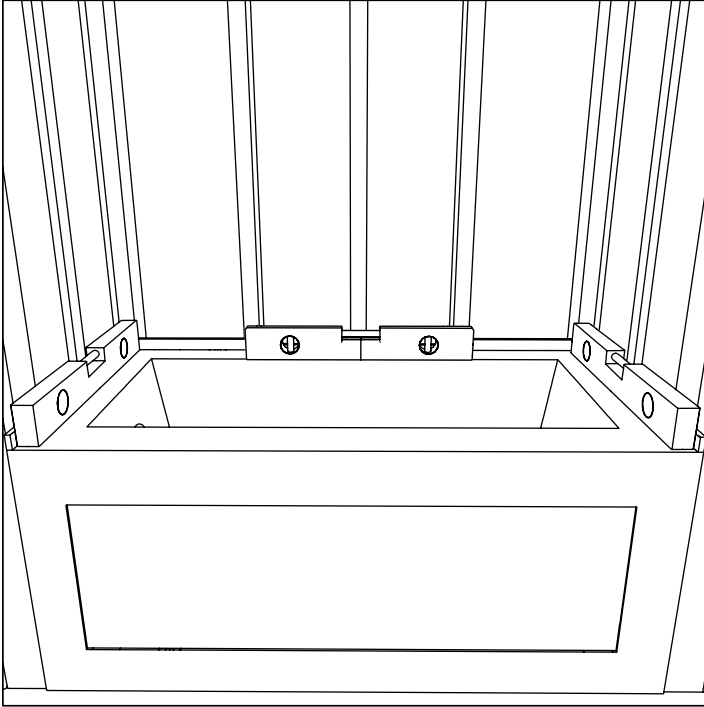
4.1 Pre-drill small pilot holes through the flange at each marked stud location.

4.2 Countersink each hole so the flathead screws will sit flush with the flange surface.



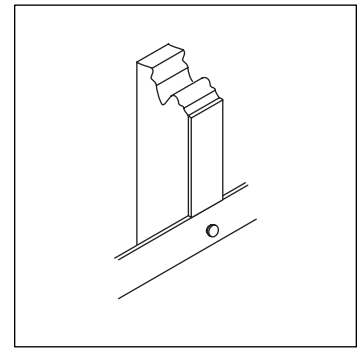
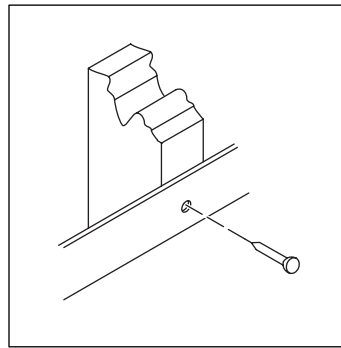
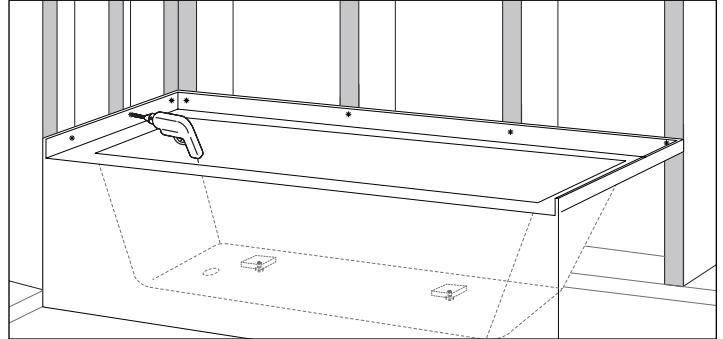
### 05 Check Leveling

Ensure the bathtub is level on all sides. Make adjustments as necessary before securing.



### 06 Secure the Bathtub

Fasten the bathtub securely to the framing using appropriate flathead screws through the pre-drilled and countersunk holes.



## MAINTENANCE GUIDELINES

- For daily cleaning, use a mixture of hot soapy water and vinegar to remove residue and maintain a fresh surface.
- For acrylic surfaces, occasional use of a specialized acrylic cleaner is recommended to enhance shine and protect the finish.
- To clean joint compound, use a plastic or wooden spatula wrapped in a damp cloth. Do not use metal blades or brushes, as they can scratch the surface.
- If using a rubber bath mat, always remove it immediately after use to prevent surface damage.
- Avoid abrasive cleaners, scrapers, metal brushes, or any tools or products that may scratch, dull, or damage the surface.

**Please note:** Damage caused by improper cleaning methods is not covered under warranty.

## **WARRANTY**

Thank you for choosing Valley Bath & Kitchen. As part of the Valley family, you are now the proud owner of some of the highest quality bath and kitchen products in the country. We are committed to ensuring your satisfaction with products designed to last.

## **LIMITED WARRANTY COVERAGE**

Valley Bath & Kitchen offers the following express limited warranties on its products. These warranties are extended only to the original purchaser/end user and apply to personal household use. Warranty coverage begins from the original date of purchase as recorded by an authorized Valley dealer.

**Note:** For commercial use, additional restrictions and limitations may apply.

## **DURATION OF COVERAGE**

Our skirted and drop-in bathtubs as well as shower bases are covered under a 20-year limited warranty for residential use, protecting against defects resulting from improper manufacturing.

## **EXCLUSIONS FROM WARRANTY**

This limited warranty does not cover damage or issues resulting from the following:

- Improper installation or failure to follow installation and maintenance instructions
- Use of harsh or corrosive chemicals
- Gloss reduction, scratching, or staining caused by water impurities, cleaning agents, or environmental conditions
- Damage due to thermal shock, cigarette burns, fire, natural disasters, or other accidents
- Any misuse, neglect, or abuse of the product—whether by the owner, contractor, or service provider

## **WARRANTY CLAIM CONDITIONS**

Valley will repair or replace any defective product under the following conditions:

- A written claim must be submitted to our head office within 10 days of the issue being identified
- The product has been used as intended, and not subject to any misuse
- The product has been installed and maintained according to our official guidelines

***Congratulations you are now a part of the Valley Acrylic Family, and an owner of the best quality sanitation products in the country.***