

CONFIGURATION

The VABSRK03 comes with the following products:

- **123.725.500**
8" Shower Arm
- **9200.750.510**
6" Square Rain Shower Head
- **000.697.000**
Universal Rough-in
- **T751.697.500**
Square Trim Kit
- **802.432.500**
Bath Spout with Diverter

FINISH



Matte Black

CERTIFICATIONS

CSA B125.1-11
ASME A112.18.1-2011

WARRANTY

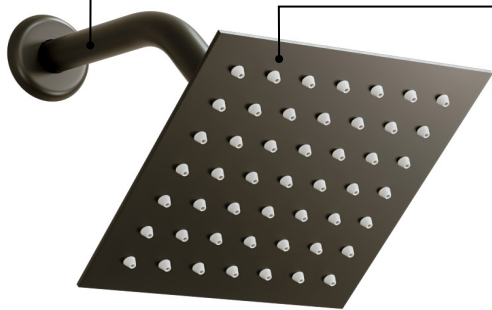
Residential: These products have a limited 1 year warranty period, with the exception of the cartridges which have a limited lifetime warranty period of ten (10) years for multi-family residential applications from the original purchase date against any failure from improper manufacturing defects.

Commercial: These products have a limited 1 year warranty period, with the exception of the cartridges which have a limited lifetime warranty period of five (5) years from the original purchase date against any failure from improper manufacturing defects. (If you can present your proof of purchase, we will provide the replacement cartridge at no charge to you.)

123.725.100

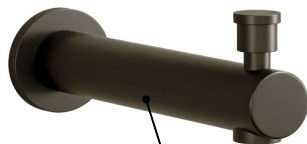
8" SHOWER ARM

9200.750.510
SHOWER HEAD



T751.697.500

SQUARE TRIM KIT



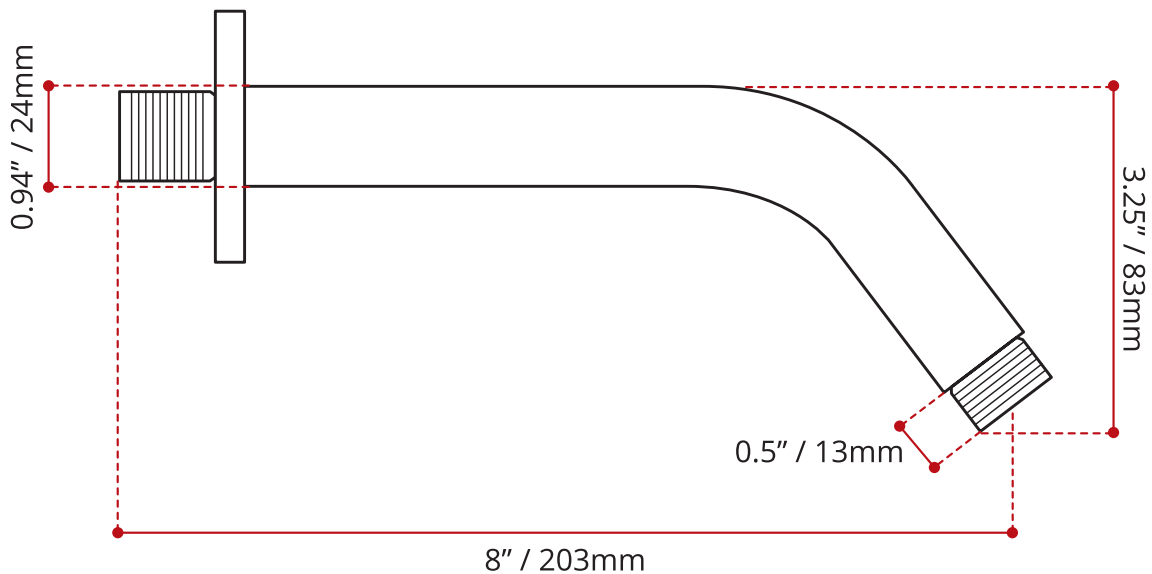
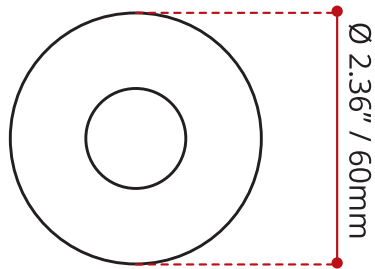
802.432.500
BATHTUB SPOUT



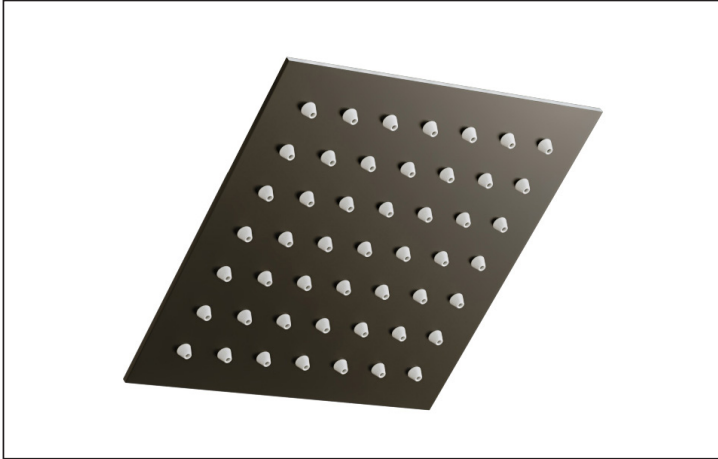
123.725.500

8" SHOWER ARM WITH FLAT FLANGE

- Round cover.
- Matte Black finish
- 1/2" NPT Male inlet
- G1/2" Male thread.

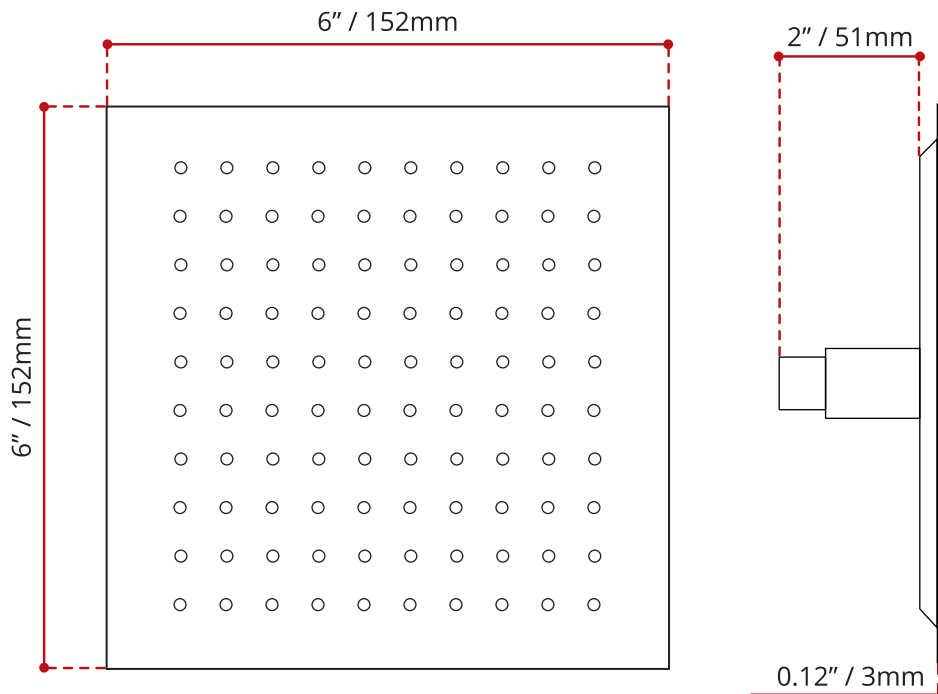


DISCLAIMER: Measurements may vary $\pm \frac{1}{4}$ " (Diagram Not to scale)



9200.750.510
6" SQUARE RAIN SHOWER HEAD

- Polished stainless steel body.
- Matte Black finish.
- Easy-clean anti-lime.
- 1/2" NPT female inlet.
- Complies with CSA standards

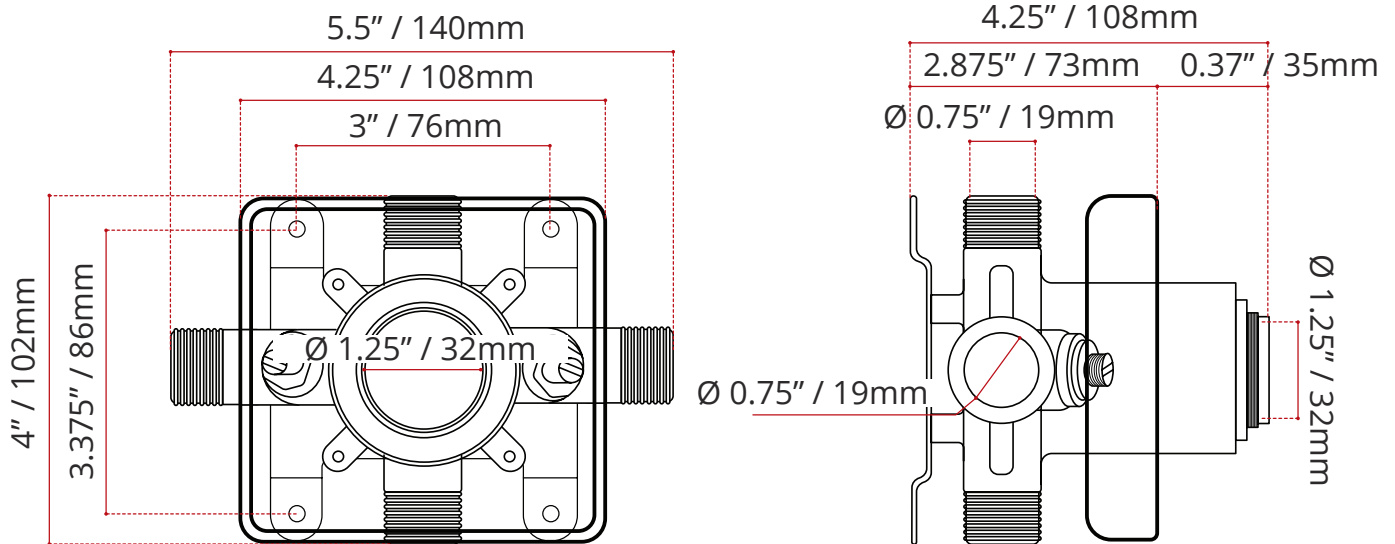


DISCLAIMER: Measurements may vary $\pm \frac{1}{4}"$ (Diagram Not to scale)



000.697.000
UNIVERSAL ROUGH-IN

- Solid brass construction
- Back-to-Back installation capabilities
- Square plasterguard allows for right angle cuts
- Thin wall mounting
- Test cap included
- Complies with CSA standards

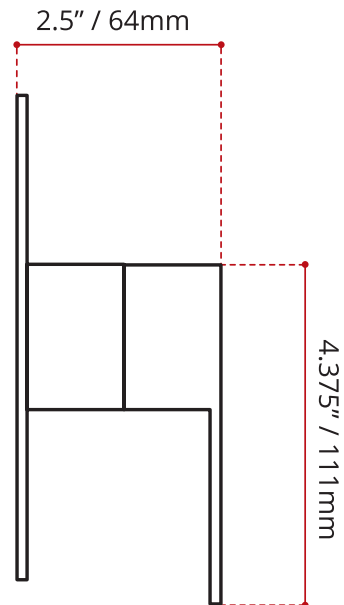
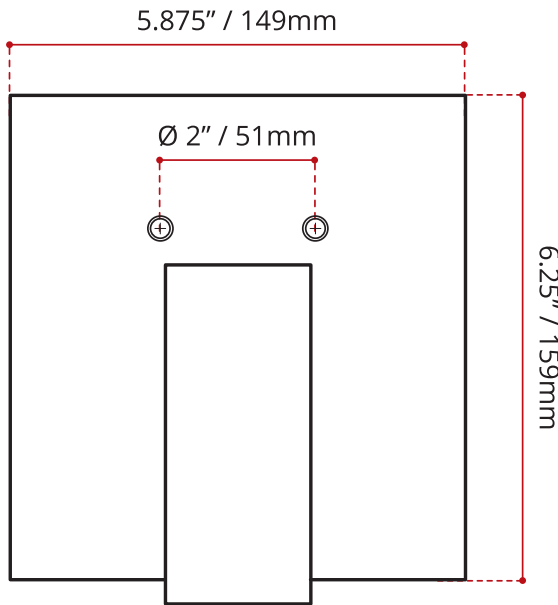


DISCLAIMER: Measurements may vary $\pm \frac{1}{4}$ " (Diagram Not to scale)



T751.697.500 SQUARE TRIM KIT

- Single Handle Square trim kit
- For use with 000.697.000 Universal rough-in (sold separately)
- Rough-in not included
- Brass body available in Matte Black finish
- High quality, drip-free ceramic cartridge
- Corrosion & discolouration resistant
- Complies with CSA & IAPMO standards

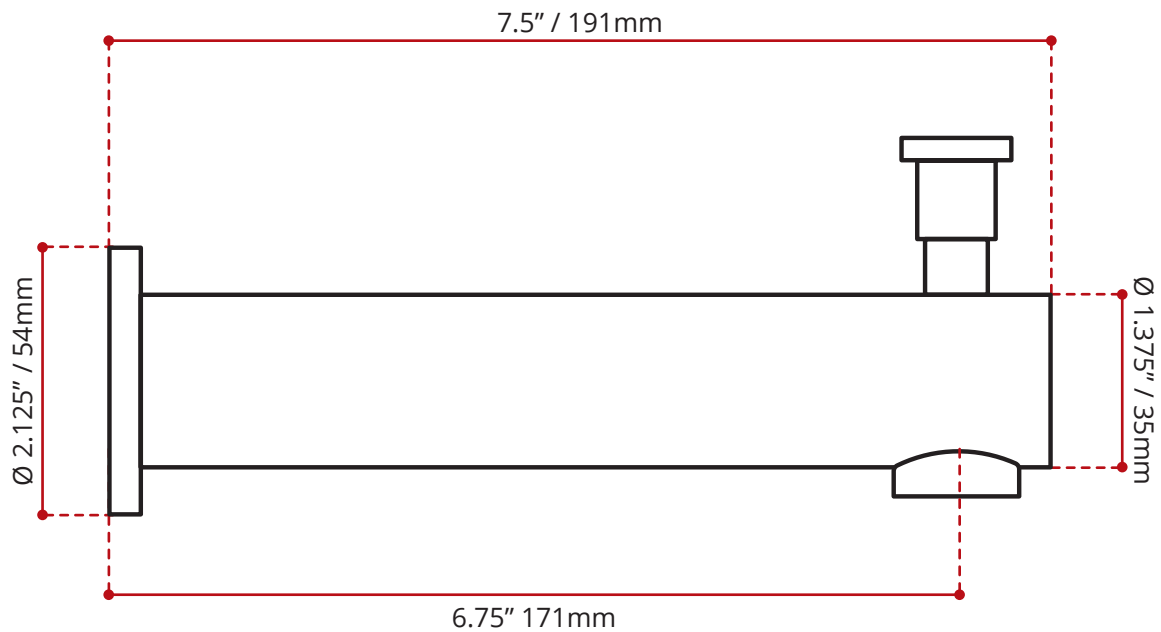


DISCLAIMER: Measurements may vary $\pm \frac{1}{4}$ " (Diagram Not to scale)



802.432.500
BATHTUB SPOUT WITH DIVERTER

- Bath spout with diverter
- Round design
- Brass body with Matte Black finish
- Sweat copper pipe connection
- Corrosion & discolouration resistant
- Complies with CSA & IAPMO standards



DISCLAIMER: Measurements may vary $\pm \frac{1}{4}$ " (Diagram Not to scale)