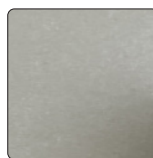


CONFIGURATION

The VARHSK05 comes with the following products:

- **120A.011.200**
Hand Shower Rail
- **802.503.200**
Supply Elbow
- **000.697.000**
Universal Rough-in
- **T802.697.200**
Round Trim Kit

FINISH



Brushed Nickel

CERTIFICATIONS

CSA B125.1-11
ASME A112.18.1-2011

WARRANTY

Residential: These products have a limited 1 year warranty period, with the exception of the cartridges which have a limited lifetime warranty period of ten (10) years for multi-family residential applications from the original purchase date against any failure from improper manufacturing defects.

Commercial: These products have a limited 1 year warranty period, with the exception of the cartridges which have a limited lifetime warranty period of five (5) years from the original purchase date against any failure from improper manufacturing defects. (If you can present your proof of purchase, we will provide the replacement cartridge at no charge to you.)

120A.011.200
HAND SHOWER RAIL

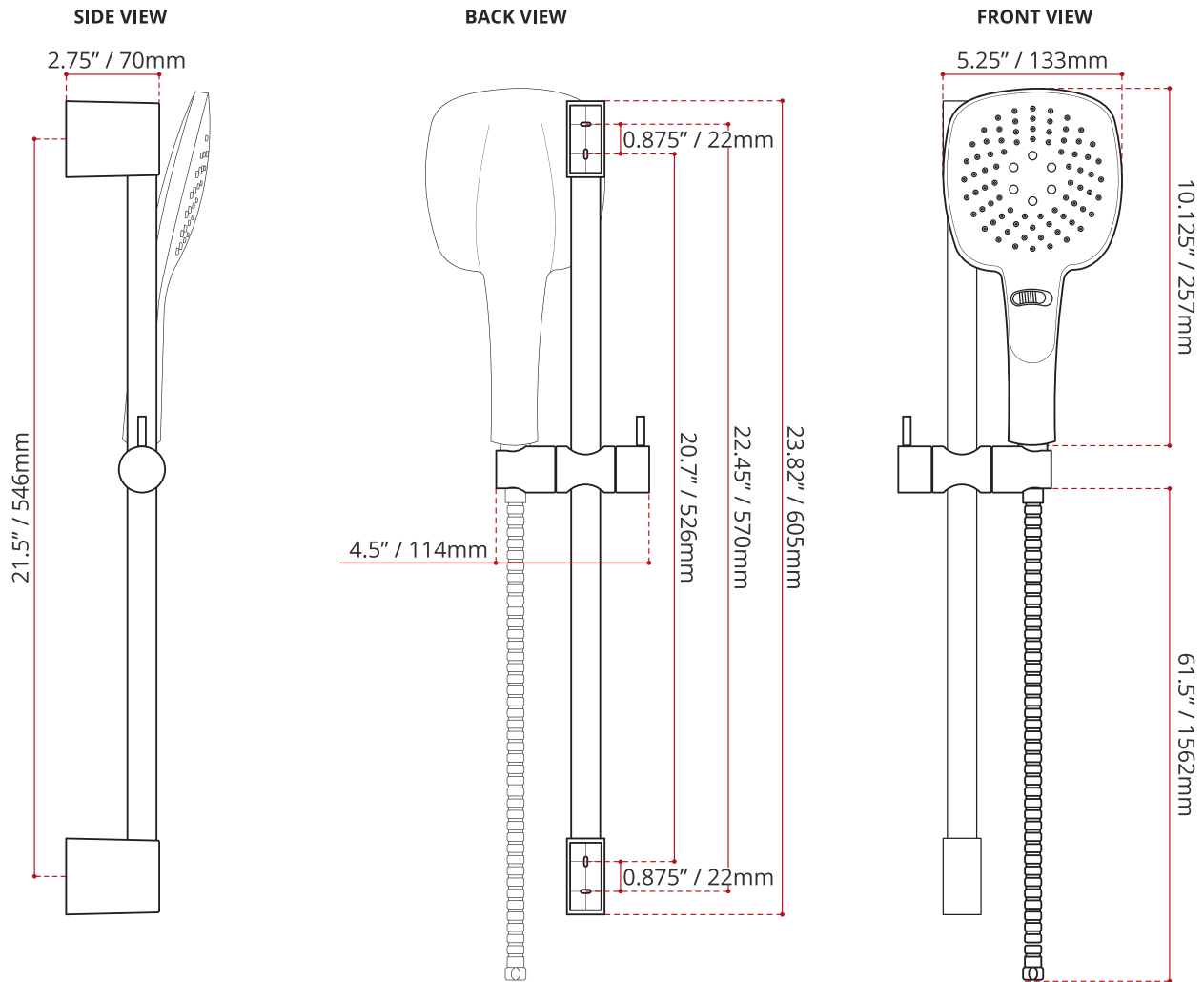
T802.697.100
ROUND TRIM KIT





120A.011.200 HAND SHOWER RAIL

- Brushed Nickel finish
- 61.5" reinforced PVC hose
- Round Hand Shower
- Solid brass body
- 23.8" Slide bar
- Corrosion & discolouration resistant
- Complies with CSA & IAPMO standards

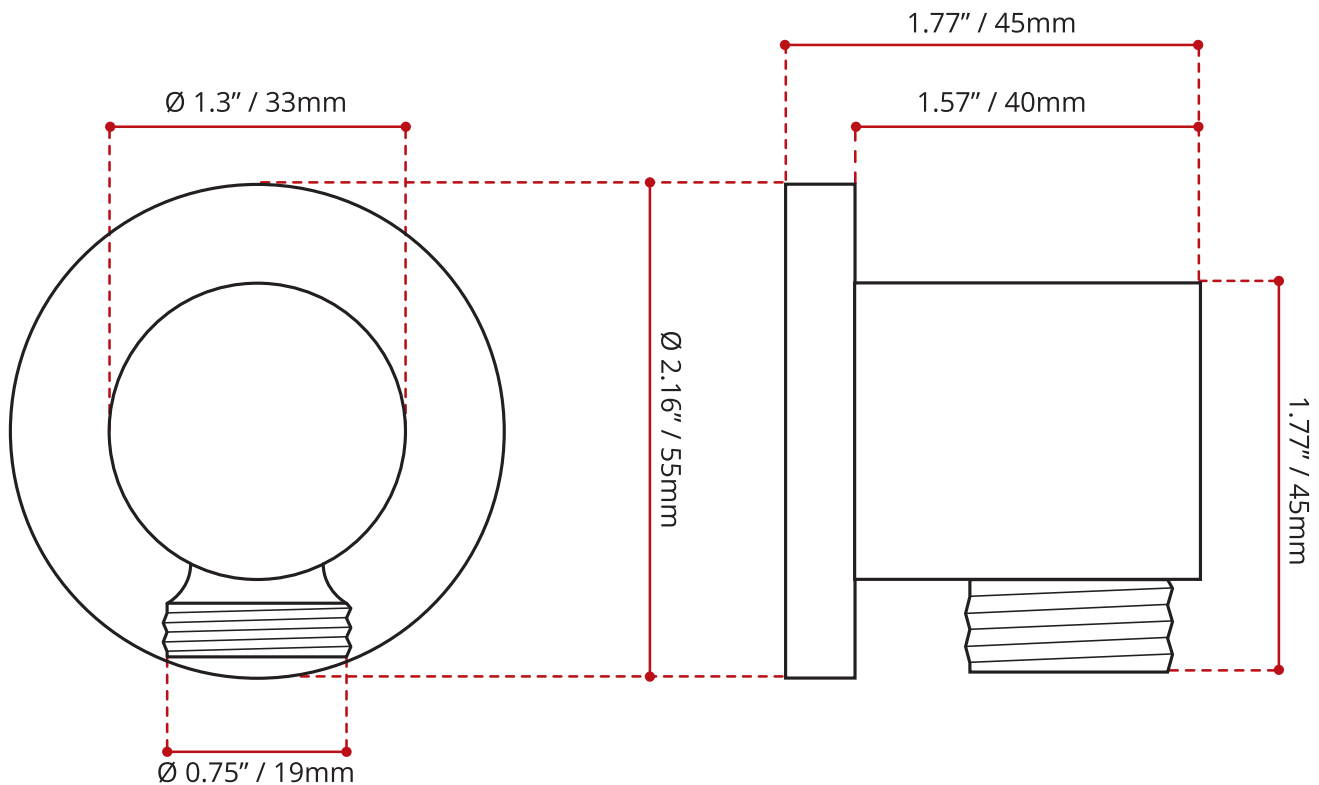


DISCLAIMER: Measurements may vary $\pm \frac{1}{4}$ " (Diagram Not to scale)



802.503.200
HAND SHOWER RAIL

- Removable plate.
- G 1/2" NPT Female thread.
- G 1/2" NPT Male thread.
- Brushed Nickel finish.

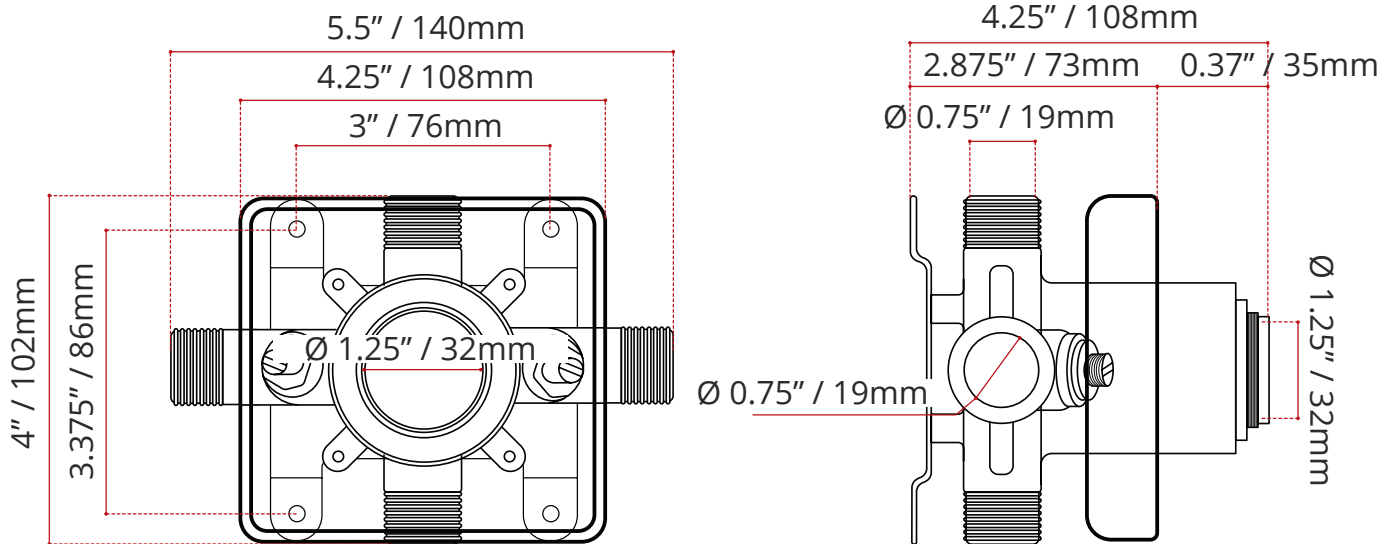


DISCLAIMER: Measurements may vary $\pm \frac{1}{4}$ " (Diagram Not to scale)



000.697.000
UNIVERSAL ROUGH-IN

- Solid brass construction
- Back-to-Back installation capabilities
- Square plasterguard allows for right angle cuts
- Thin wall mounting
- Test cap included
- Complies with CSA standards

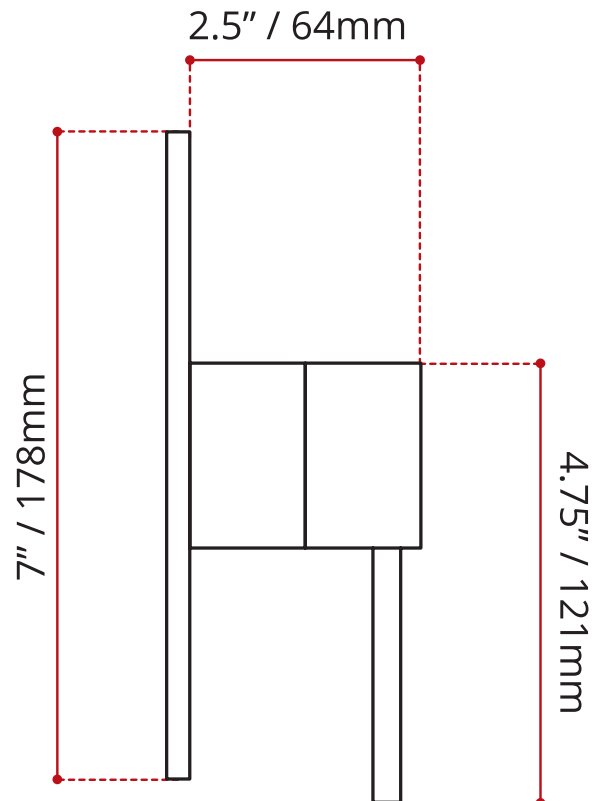
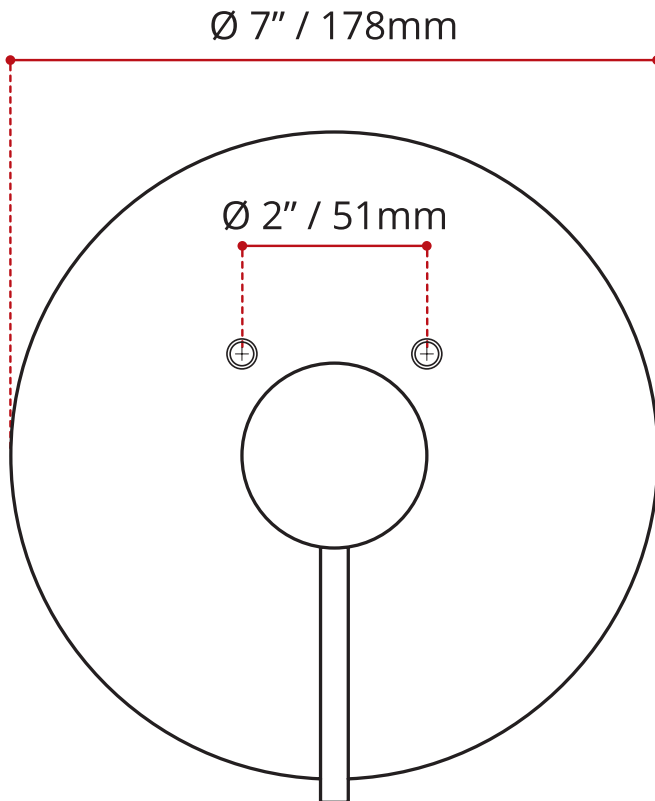


DISCLAIMER: Measurements may vary $\pm \frac{1}{4}$ " (Diagram Not to scale)



T802.697.200 ROUND TRIM KIT

- Single Handle Round trim kit
- For use with 000.697.000 Universal rough-in (sold separately)
- Rough-in not included
- Brass body in brushed nickel finish
- High quality, drip-free ceramic cartridge
- Corrosion & discolouration resistant
- Complies with CSA & IAPMO standards



DISCLAIMER: Measurements may vary $\pm \frac{1}{4}$ " (Diagram Not to scale)